



erickson  
WOODWORKING



A DINING TABLE FOR GENERATIONS

ERICKSON WOODWORKING

Robert Erickson  
Tor Erickson  
Liese Greensfelder  
Robert Corns

FURNITURE

All furniture designed by Robert and Tor Erickson  
All furniture built by Robert Erickson, Tor Erickson and Robert Corns

CATALOG DESIGN

Tor Erickson

PHOTOGRAPHY

All photography by Tor Erickson except for pages 1-3 by Kat Alves, page 17 by Iker Basterretxea, page 31 by Sara Greensfelder and page 33 by Jim Beckett.

“First we eat, then we do everything else.”

- M.F.K. Fisher





# A Dining Table for Generations

In 1969, Robert Erickson began making wooden stools by hand. His son, Tor, joined Erickson Woodworking four decades later. Today all of the furniture created by this multi-generational partnership is still built by hand, one piece at a time.

In this catalog we explore one of our specialties: the dining set, a gathering place for good food and good company.

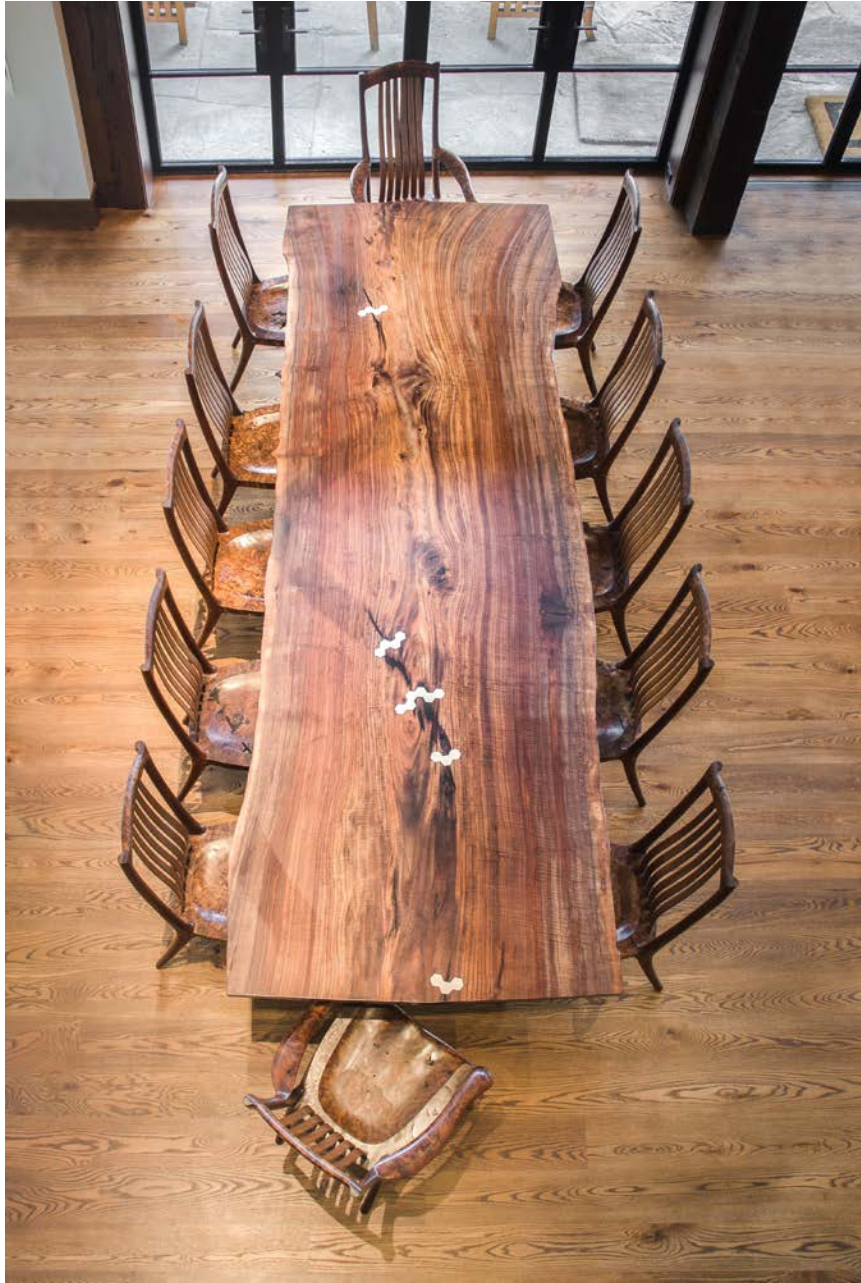
Welcome to the table.



COLUMNAR TABLE  
California walnut, columnar basalt, bronze

# 1. The Table

The dining table sits at the heart of your house, a place to gather with friends and family to share a special meal, tell stories, and live life surrounded by those you love. All of our tables are designed to perfectly fit your home and needs. Each is made with care and attention in our woodshop in the foothills of the Sierra Nevada.



### COLUMNAR DINING TABLE

Single slab of California walnut with bronze inlay. South Yuba side and arm chairs in California walnut burl.



◀ A book-matched, live-edge slab table is perfect for those who want some symmetry but also the wildness of a tree's natural beauty.

## THE TABLETOP

Whether it's made with the butterfly pattern of a book-match, a single live-edge slab, or a series of boards selected for color and grain, the tabletop is the place to start when thinking about the look and feel of your dining set.



A table made from a single slab of wood invites the ►  
beauty of nature into your home.







## DETAILS

Every table needs details, accents that highlight the whole, such as a carefully placed butterfly wedge to stabilize a crack or an arris that draws attention to the curves of the base.

Details are often expressions of the desires and choices of our clients. Wedges can be made from a wood or a tree that has special meaning. Leaving a crack unfilled can be a demonstration of love for the natural world. An inlay from an antler found on a mountainside can remind you of a favorite hiking spot.

Details are what make a dining table uniquely yours.

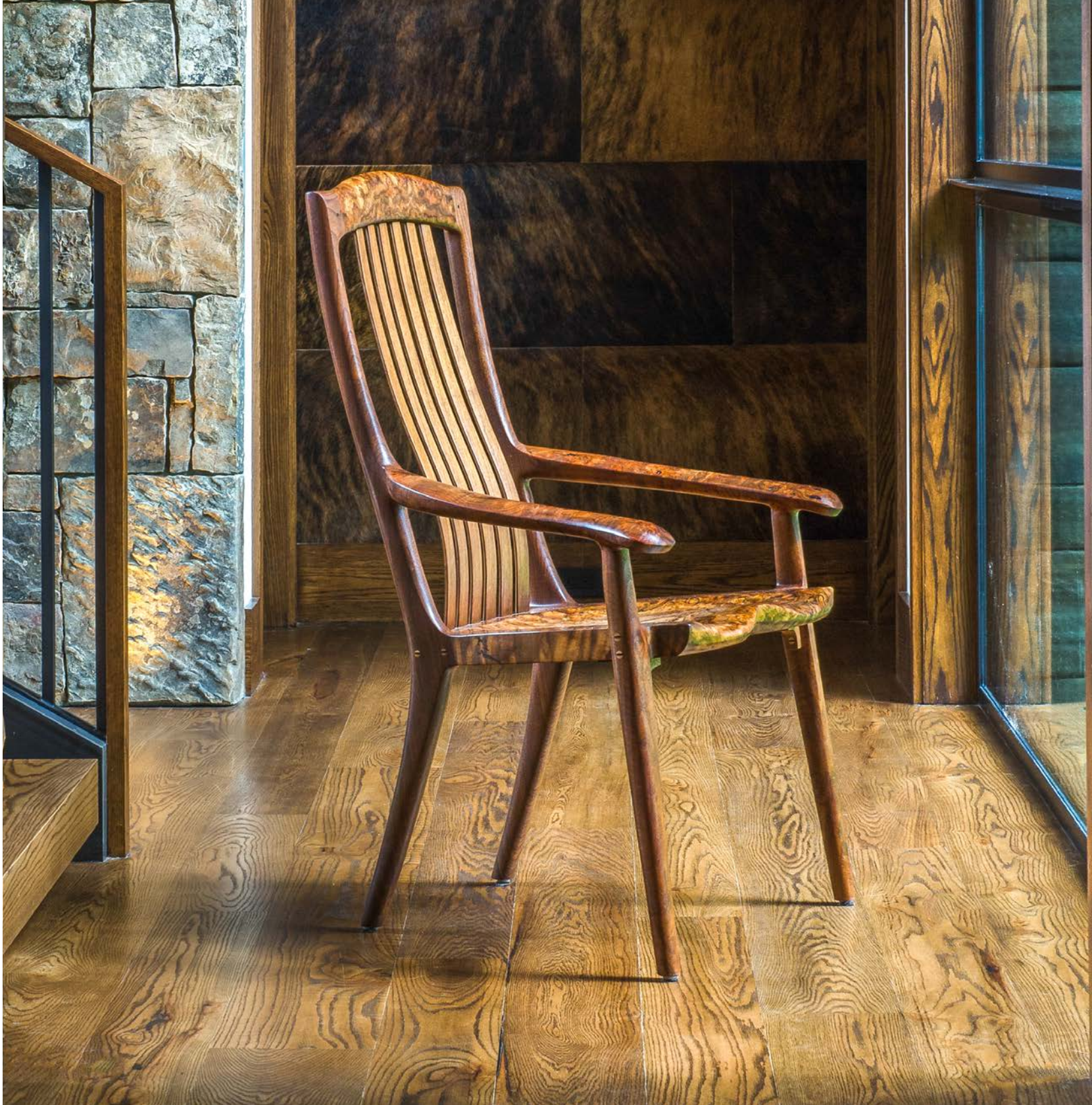


◀ Rosewood butterfly wedges in the top of the Wapiti Table

## 2. The Chair

The chair has been our specialty for decades. In woodworking it can be the most challenging piece to master, as it demands not just taking into account aesthetic and engineering considerations, but also the complexities of the human body.

All of our dining chairs are designed to be light, strong, and comfortable enough to sit in for hours.





A close-up, vertical photograph of a wooden chair's leg and seat, showing the smooth, polished grain of the wood. The leg is on the left, and the seat is on the right, both in shades of warm brown.

## CHAIRS THAT FIT

The comfort of the chair has been central to Erickson Woodworking since our founding in 1969. We've narrowed down the perfect fit to ten different elements that range from the angle of the seat to the depth of the scoop that cradles your sit bones.

All of these elements have to work in concert to make a chair comfortable. We've spent thousands of hours composing this particular symphony.

For ultimate comfort, choose one of our South Yuba chairs with their flexible floating back slats.

◀ Each of our South Yuba chairs is fitted with a set of six flexible back slats made from your choice of red elm or hard maple.



### **WRAPAROUND ARMS**

Mirror the shape of your hands, making a wonderful place to rest your palms.

### **SCULPTED SEAT**

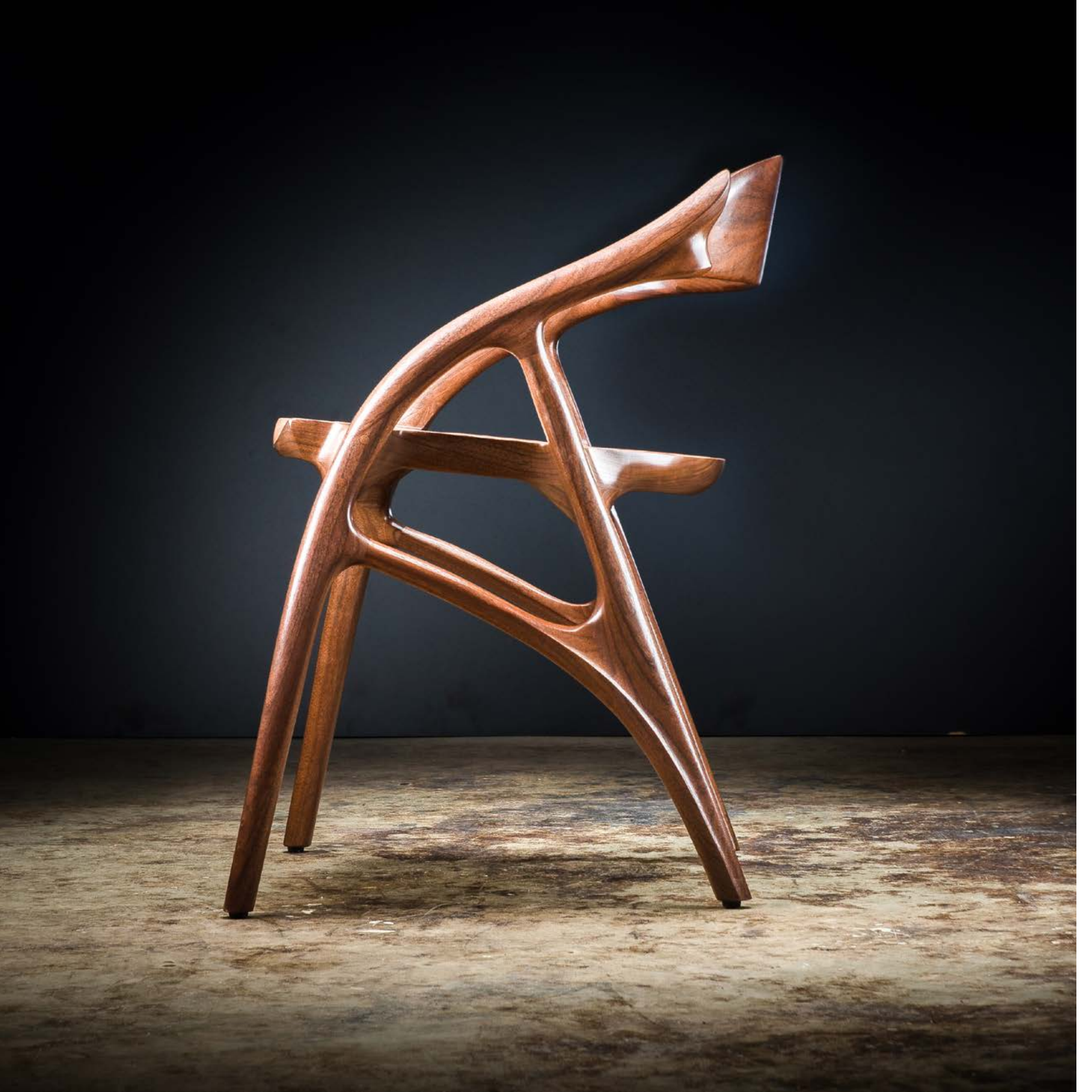
To provide maximum support and distribute weight evenly.

### **FLEXIBLE FLOATING BACK**

Made from laminated strips of red elm or sugar maple, these slats provide support where you need it and flex where you want it.

### **THE PERFECT TILT**

The seat is tilted back at just the right angle so that you're upright enough to eat dinner, but not so upright that you can't relax.



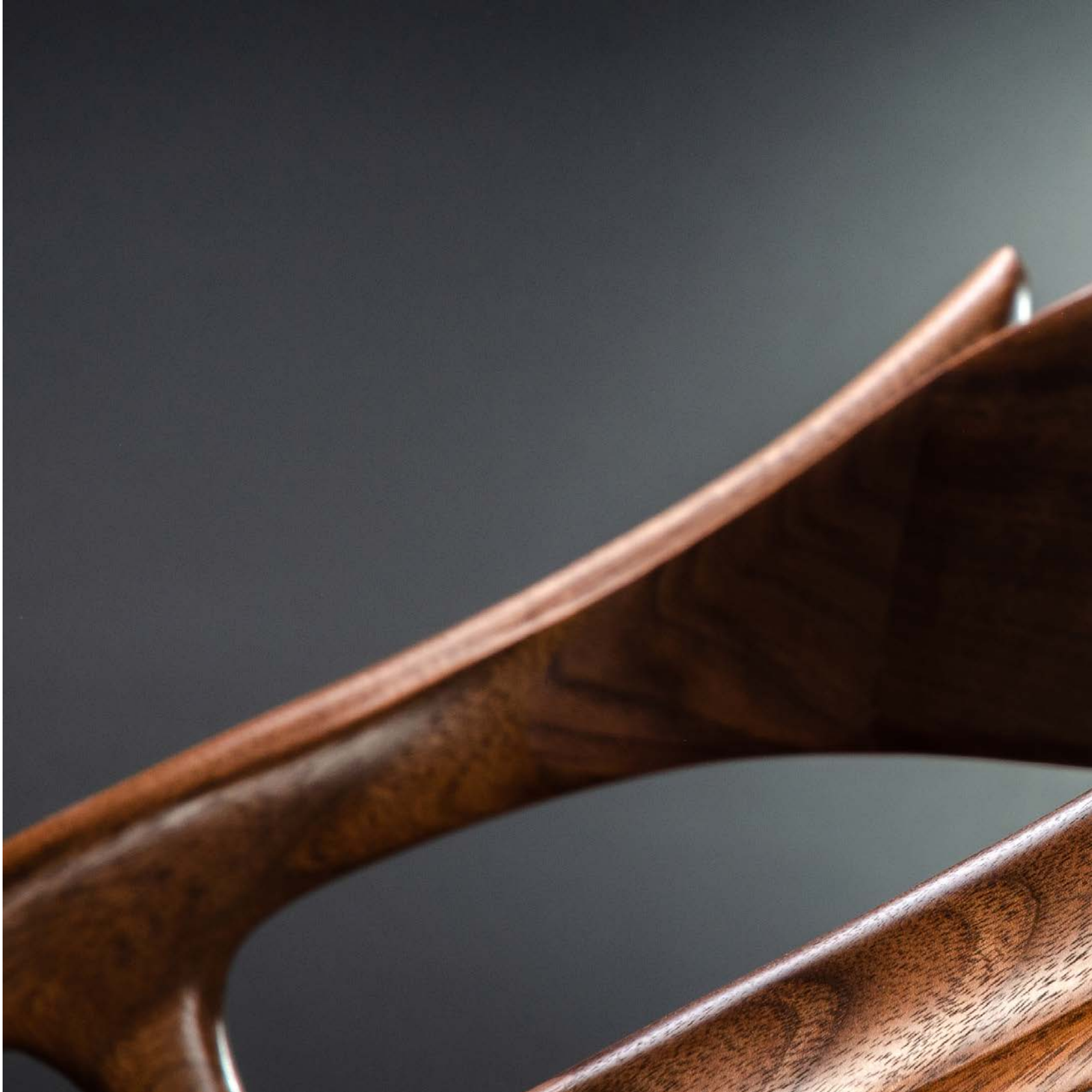
◀ Before we start shaping the Wapiti Chair, it weighs 25 pounds. By the time we're done it weighs 13, the rest having been cut away to reveal the chair's graceful form.

## SCULPTURE YOU CAN SIT ON



As designers and makers of chairs, we love a comfortable place to sit and are thrilled by the beauty of form. After we've joined the chair together with fluted dowels and mortise-and-tenon joints, we use hand-held tools to sculpt it to its final shape.

A curve that is both functional and beautiful is the ►  
hallmark of an Erickson Woodworking chair.







THE SOUTH YUBA RIVER



HAND TOOLS FROM THE SHOP

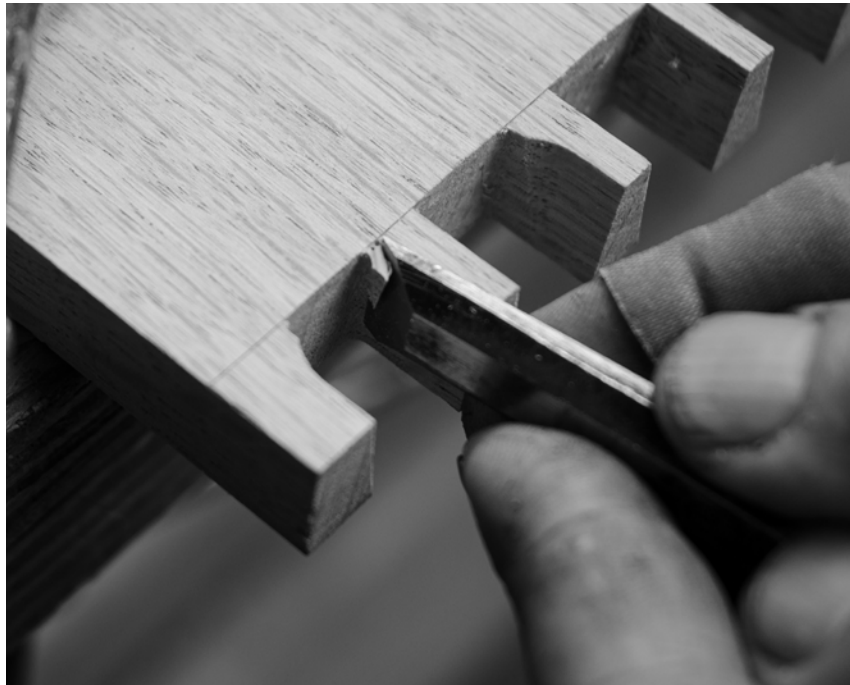
## 3. Process

What goes into an Erickson Woodworking dining set? We start with the wood. Most often it's material we've harvested, milled and dried ourselves to a set of standards that we've spent decades developing. Before we cut out the parts of a chair or table, we spend a few hours arranging their templates onto the selected boards to assure that the wood's color and patterns will be shown to their best effect. After that, we build the pieces using hand-crafting techniques that date back hundreds of years.

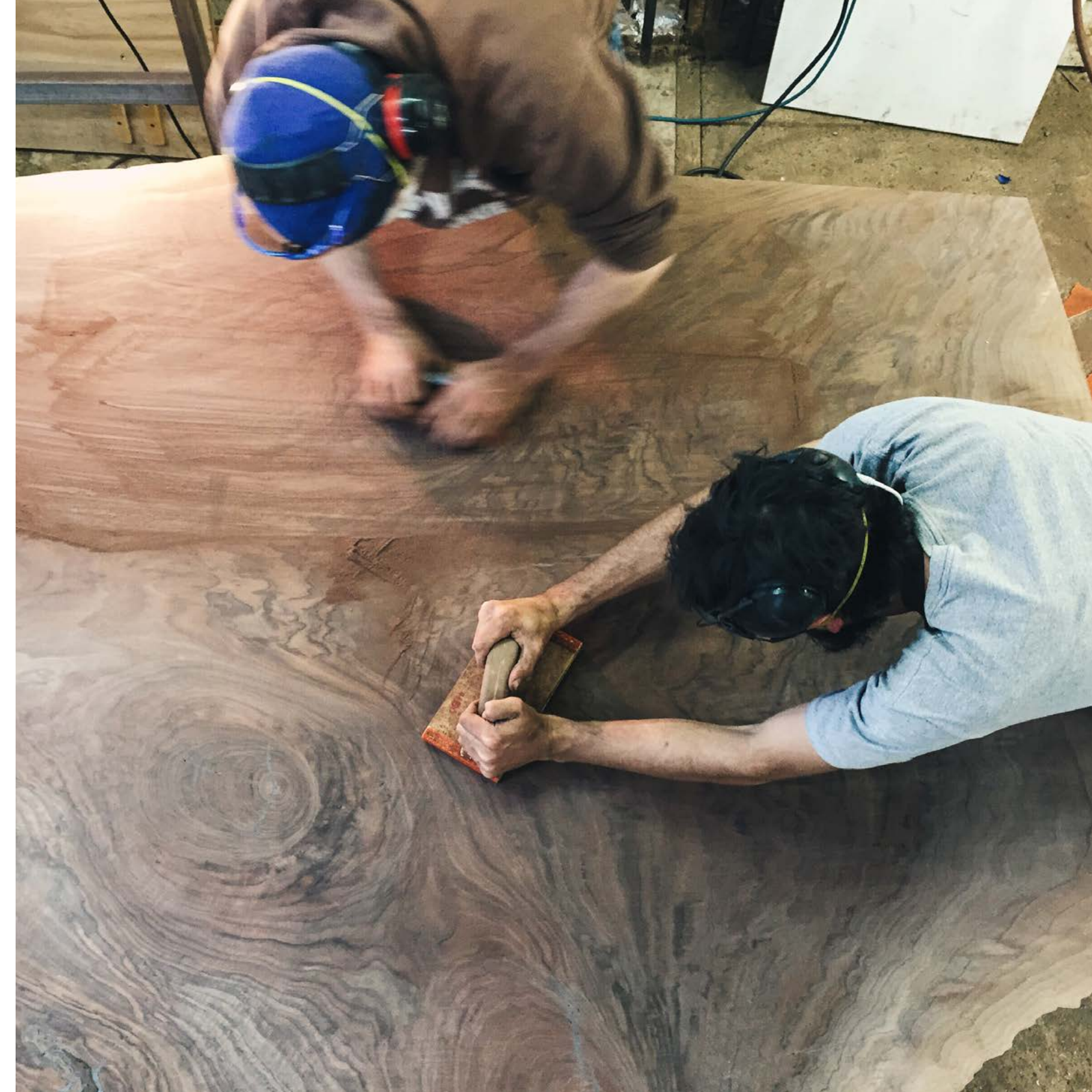


## MADE BY HAND

We are not industrial manufacturers or machinists. None of our tables or chairs is a clone of any we've made before. We celebrate the variation and character that distinguishes our work, and we respect the mark of the maker in each of our pieces.

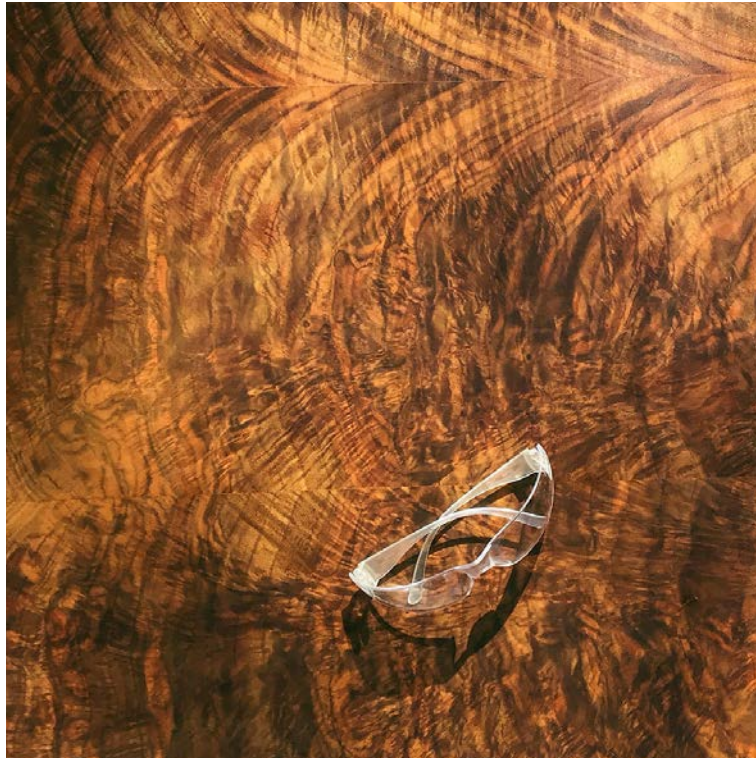


With tricky grain, sometimes the only way to keep a table surface flat during the finishing process is by sanding it by hand. ▶





## CALIFORNIA WALNUT



California walnut isn't the only wood we use, but it is the one we use more than any other. All of our California walnut comes from trees salvaged from California's Great Central Valley. This material is the most prized and beautiful of all domestic hardwoods. It exhibits an unmatched range of color and grain that makes each piece unique.

◀ Robert Erickson uses a chainsaw to rip a California walnut log in half.



ERICKSON WOODWORKING

Robert Erickson, Liese Greensfelder, Tor Erickson, Robert Corns

## A TRADITION THAT SPANS GENERATIONS

Tradition is the accumulation of knowledge and experience over time. It is the evolution of design, the exploration of technique and the passing on of this consciousness from one generation of craftspeople to the next, from Robert Erickson to his son, Tor, from Tor to Robert Corns.

At Erickson Woodworking we work in a tradition that respects and incorporates the past while seeking new ways of moving forward.



Robert Erickson 1976



The Rung Chair in California black oak and leather 1978

## 4. The Furniture

A selection of dining tables and chairs from Erickson Woodworking. All of these pieces work well together, and can be made in an assortment of woods and sizes.



SANDHILL TABLE

California walnut and hand-forged steel



SUMI ARM CHAIR  
California walnut



WAPITI CHAIR  
black walnut



SOUTH YUBA ARM CHAIR  
quilted Pacific maple



SOUTH YUBA SIDE CHAIR  
California walnut



SANDHILL CHAIR

California walnut and hand-forged steel



SOUTH YUBA SIDE CHAIR  
California walnut

WAPITI TABLE  
black walnut





**GOLDEN TABLE**  
California walnut





**DES TOMBE TABLE**  
California walnut, machined brass









ERICKSON WOODWORKING

18977 Wepa Way

Nevada City, California 95959

(530) 292 - 3777

[www.ericksonwoodworking.com](http://www.ericksonwoodworking.com)